



Investor Presentation

February 2022



Forward-Looking Statements; Non-GAAP Financial Measures

This presentation contains forward-looking statements within the meaning of the U.S. Securities Exchange Act of 1934 and the Securities Act of 1933. The forward-looking statements include statements concerning, among other things, our future business model and strategies, our financial model and structure, market and market share growth, industry trends, customer demand and growth opportunities. In some instances, you can identify these statements by forward-looking words, such as "may," "might," "will," "could," "should," "expect," "plan," "anticipate," "believe," "estimate," "predict," "intend" and "continue," the negative or plural of these words and other comparable terminology. The target financial model described in this presentation is intended to aid in the evaluation of long-term potential, and is not guidance or a statement of forecasted performance in a specific future period. The forward-looking statements are only predictions based on our current expectations and our projections about future events. All information and forward-looking statements included in this presentation and the related discussions are based upon information available to us as of February 2, 2022. You should not place undue reliance on these forward-looking statements. These forward-looking statements are subject to known and unknown risks, uncertainties and other factors that may cause our actual results, levels of activity, performance or achievements to differ materially from those expressed or implied by these statements, including risks related to technology and market trends; the benefits of acquisitions and investments; macroeconomic conditions; uncertainties related to the COVID-19 pandemic and the impacts of our responses to it; the interpretation and impacts of changes in export controls and other trade barriers; our success in executing our business strategies and other risks discussed in the section titled "Risk Factors" and elsewhere in our Annual Report on Form 10-K for the year ended December 26, 2020 and in our other filings with the U.S. Securities and Exchange Commission copies of which may be obtained by visiting the Investor Relations section of our website at <http://investors.formfactor.com> or at www.sec.gov.

This presentation and related discussions contain non-GAAP measures relating to our financial performance. These measures may be different from non-GAAP financial measures used by other companies. The presentation of this financial information is not intended to be considered in isolation of, or as a substitute for, financial information prepared and presented in accordance with generally accepted accounting principles. You can find the reconciliation of non-GAAP financial measures to the most directly comparable U.S. GAAP measures in the Supplemental Information contained in this presentation.

FormFactor At a Glance

TTM Revenue*
\$770M



Advanced Probe Cards
for Chip Production



115,000,000+
MEMS PROBES/YEAR

Engineering Systems



10,000+
INSTALLED PROBERS

Global Manufacturing, Design
and Customer Service Presence



~ **2,300**
PEOPLE



Recognized by
Industry Leaders**

Intel

TSMC

Micron

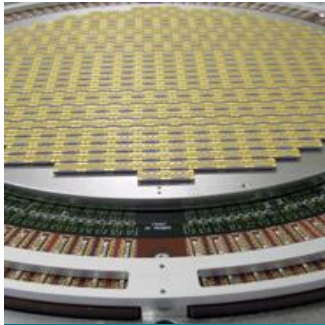
SK hynix

Samsung

*As of 2/2/22

** Customers that have accounted for >10% of revenue for one or more quarters since Q1 FY18

Compelling Investment Thesis

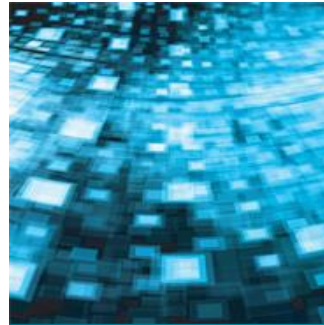


Market leader in large and growing semiconductor test and measurement sector



Benefits from powerful secular trends:

- Exponential growth in semiconductor content, increased 5G and data center spending
- Adoption of advanced packaging to counter slowdown in Moore's Law



Technology leadership enables customers' most critical roadmap advancements, from R&D through Production



Profitable financial model with earnings growth and strong cash flow

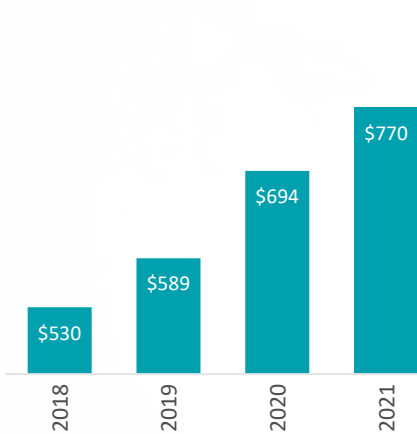


Active execution of acquisition strategy increases scale and diversification

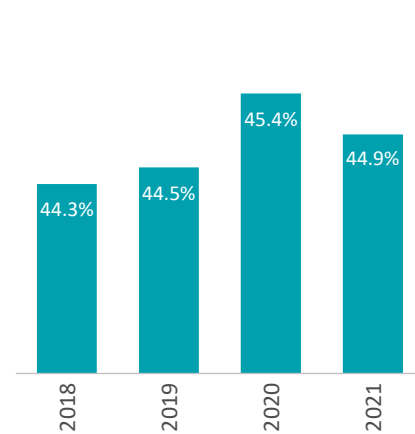
Proven Track Record

Revenue

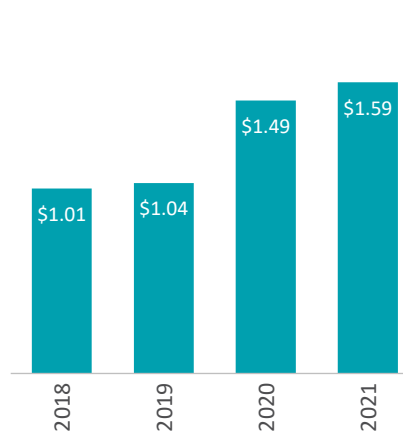
\$ IN MILLIONS



Non-GAAP Gross Margin

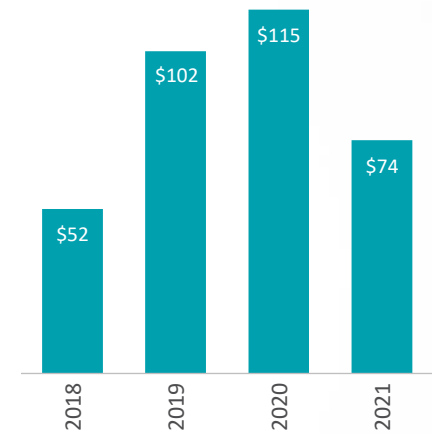


Non-GAAP EPS*



Free Cash Flow

\$ IN MILLIONS



Expanding Market Share Leadership

Benefits From Scale and
Operational Execution

Significant Operating Leverage

Cash Generative Business Model

See Supplemental Information for reconciliations of non-GAAP financial measures to the most directly comparable GAAP financial measures.

*Reflects inclusion of deferred tax expenses in Non-GAAP EPS starting Q1'19. All references to EPS are on a diluted basis.

Sources: Historical information, company SEC filings and press releases.

Recognized Industry Leader



2014 • 2015 • 2016
2017 • 2018 • 2019
2020 • 2021



FormFactor Receives Five Star Rating in Annual VLSIresearch Customer Satisfaction Survey

LIVERMORE, Calif., May 13, 2021 (GLOBE NEWSWIRE) — FormFactor, Inc. (NASDAQ: FORM), a leading semiconductor test and measurement supplier, announced that it has once again been named a 10 BEST and THE BEST Supplier in VLSIresearch’s annual customer satisfaction survey, with five of five stars in three categories;

- 10 BEST Focused Suppliers of Semiconductor Equipment,
- THE BEST Suppliers of Test Equipment, and
- THE BEST Suppliers of Test Subsystems.

The survey includes the feedback of worldwide semiconductor manufacturing companies, rating suppliers in 14 categories, and measuring in each – supplier performance, customer service, and product performance. The results mark eight consecutive years that FormFactor has been selected in THE BEST Suppliers of Test Subsystems which includes manufacturers of probe cards, test sockets, and device interface boards. In April, the company was also ranked as the world’s top supplier of semiconductor probe cards in a separate VLSIresearch report.

“Customers give FormFactor high rankings for quality of results and product performance,” said G. Dan Hutcheson, CEO of VLSIresearch. “The survey provides insights into customer sentiments, measuring critical factors for customers. In multiple categories, FormFactor was rated as a 5 VLSI Star supplier.”

Trusted by leading semiconductor designers and foundries

How FormFactor Wins

Early Customer Engagement
Creates Competitive Advantage
and High Barriers to Entry

Technology and Applications
Leadership Relied Upon
by Customers

Deliver Market-Leading
Products with World-Class
Cycle Times and Quality

Largest R&D Budget in
Served Markets, Enabled
by Industry-Leading Scale



FormFactor Occupies a Unique Place in Semiconductor Industry

Front-End: Wafer Fabrication Equipment



Industry: \$55 Billion

- 6% CAGR
- Highly cyclical, tied to capital spending
- Highly consolidated

Wafer Test & Measurement



Industry: \$1.9 Billion

Advanced Probe Cards: \$1.5B; Engineering Systems: \$0.4B

- 6% CAGR for Advanced Probe Cards, device-specific consumables
- 3% CAGR for Engineering Systems, driven by R&D budgets
- Demand driven by design releases on both new and existing nodes
- Moderate cyclicity
- Consolidated industry

Back-End: Wafer Assembly and Final Test



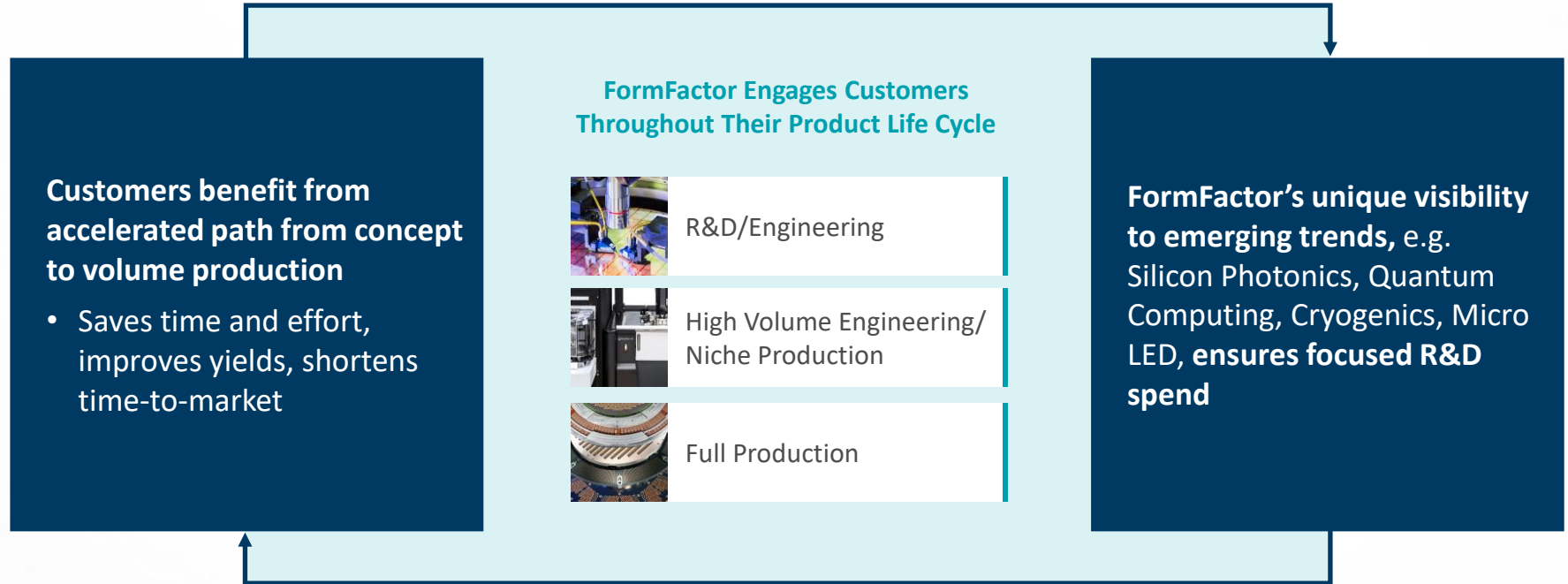
Industry: \$3.5 Billion

- 7% CAGR
- Highly cyclical, tied to capital spending
- Highly fragmented

Customers' shorter product cycles and faster times-to-market amplify secular growth in silicon devices

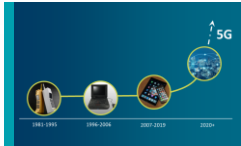
Sources: All market size and growth rates are VLSIresearch estimates, except for Engineering Systems which are company estimates.

Customers Value, FormFactor Benefits From “Lab to Fab” Capabilities

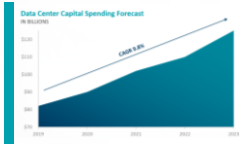


FormFactor Benefits from Two Industry Dynamics

Secular Growth in the Semiconductor Industry



Exponential Growth in Semiconductor Use

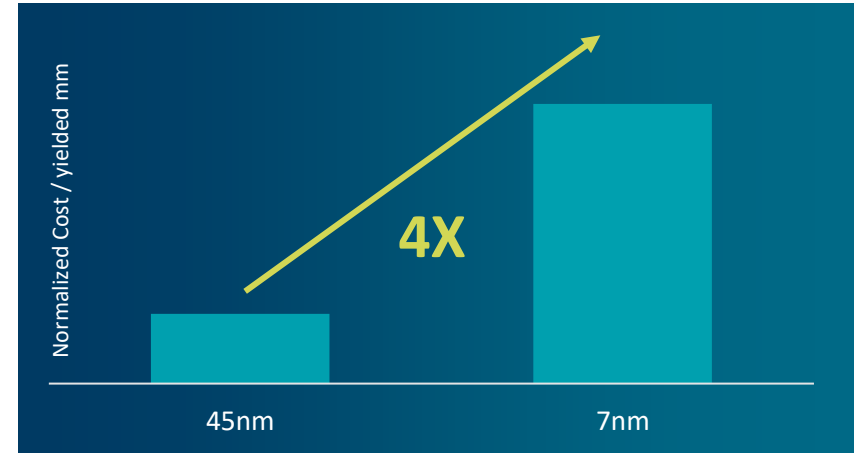


Increased Infrastructure and Enterprise Spending



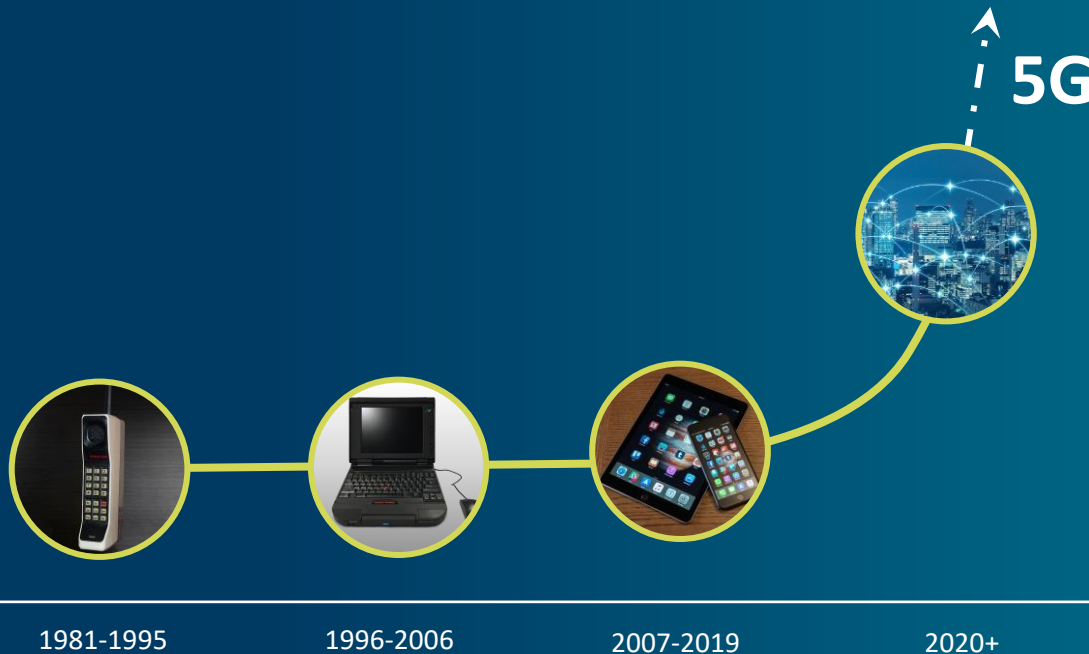
5G Applications in Mobility and Automotive

Slowing of Moore's Law: Node shrinks no longer provide cost reduction



Source: Su (AMD), IEDM 2017.

Exponential Growth in Silicon Devices Will Be Accelerated by 5G



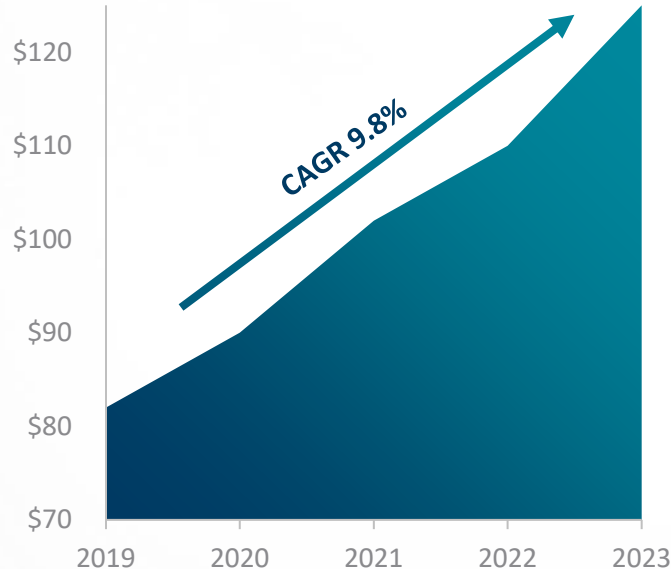
Key Factors for 5G Success

- RF expertise
- R&D-intensity
- Dependable supplier
- Customer intimacy

Infrastructure Spending and 5G Adoption Are Spurring Semiconductor and Probe Card Use

Data Center Capital Spending Forecast¹

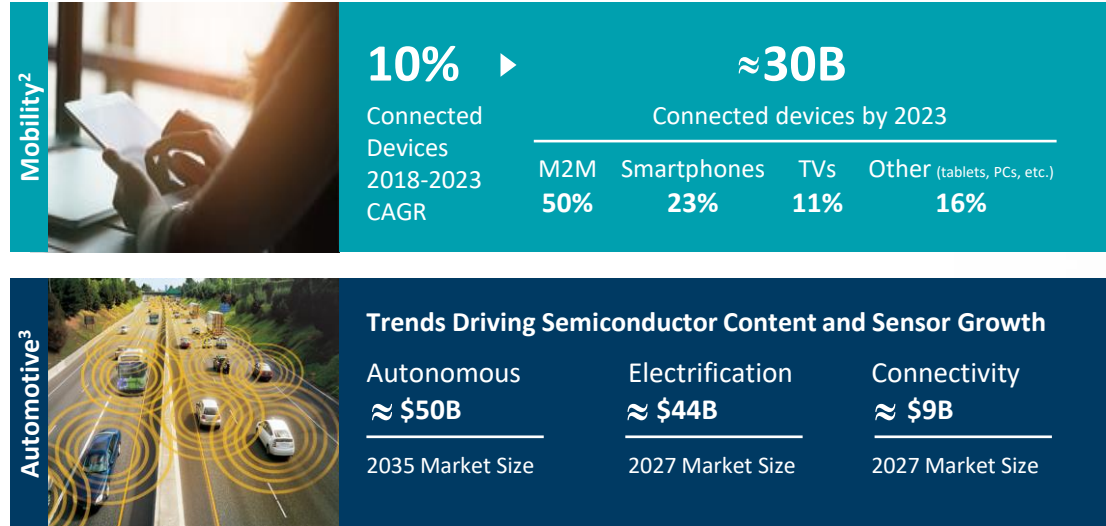
IN BILLIONS



Source:

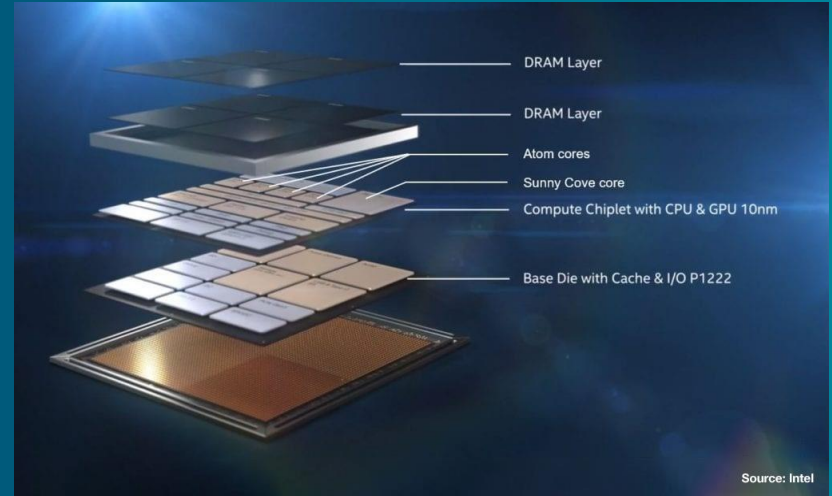
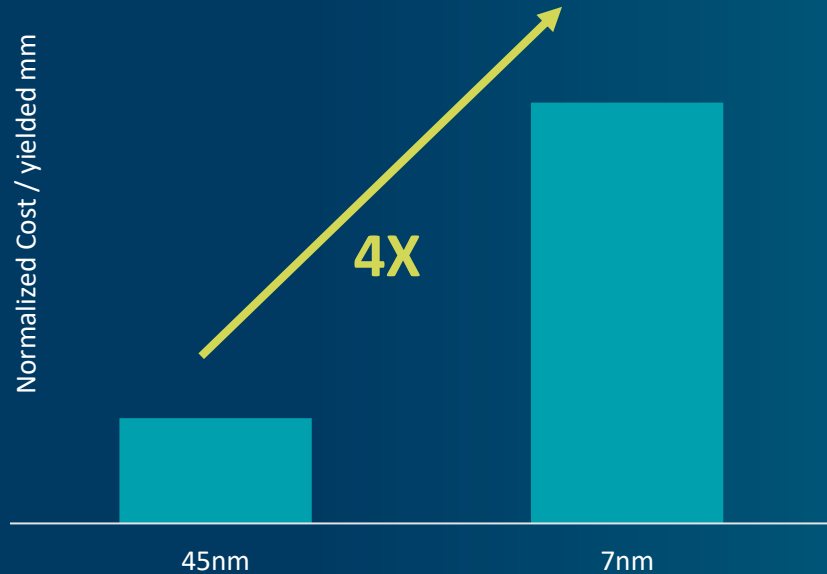
1. Omdia
2. Cisco "Annual Internet Report"
3. Lear Corporation, IHS Automotive for industry production.

5G Will Drive Increased Content in Mobility and Automotive Applications



Advanced Packaging Addresses Scaling Challenges As Moore's Law Slows

Node shrinks no longer provide cost reduction




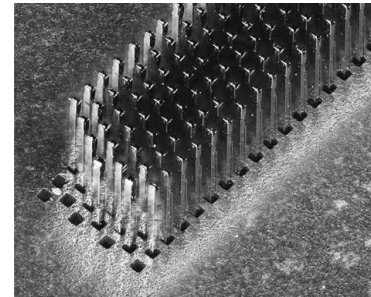
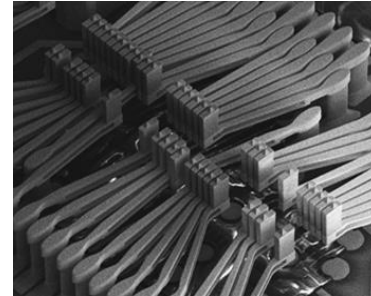
Advanced Packaging improves product-level performance, power and density

Source: Su (AMD), IEDM 2017.

Note: Cost per yielded mm² for a 250 mm² die.

Probe Cards are Critical to Advanced Packaging

TEST INTENSITY		Cost of the Advanced Packaging Solution	
		Low	High
Semiconductor Die Yield	Low	Some	LOTS! 
	High	Little	Some



Test intensity, and therefore probe card demand, increases as advanced packaging becomes widespread

Unique Capabilities Position FormFactor for Faster Growth in Advanced Probe Cards

8%+ CAGR**

FormFactor

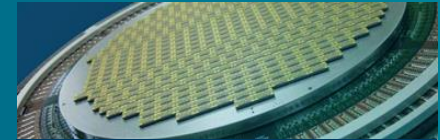
- Proprietary Technologies
- Strong Customer Relationships
- Productive R&D Spend

6% CAGR*

Advanced Probe Card Market

5% CAGR*

Probe Card Market



Memory



High Frequency (RF)



Logic

\$2 Billion Advanced Probe Card Market In 2023

Source: *2020 VLSIresearch estimates.

**Company estimates.

Poised for Above-Market Growth in Engineering Systems

5%+ CAGR**

FormFactor

- Largest Installed Base
- Autonomous Measurement Solutions Leader
- Broadest Portfolio

3% CAGR*

Engineering Systems Market

3D Surface
Metrology



200 mm
Automated



300 mm
Automated

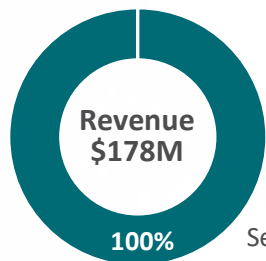


Technology Leadership and Worldwide Infrastructure Lead to Customer Intimacy and Early Involvement

Source: *2020 VLSIresearch estimates.

**Company estimates.

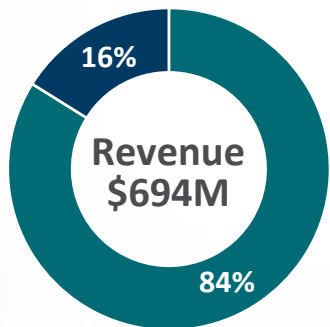
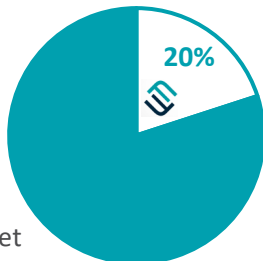
FormFactor's New Target Model



2012

\$0.9B

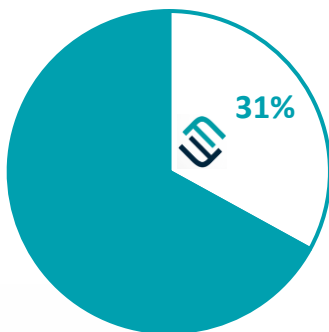
Served available market
Advanced Probe Cards



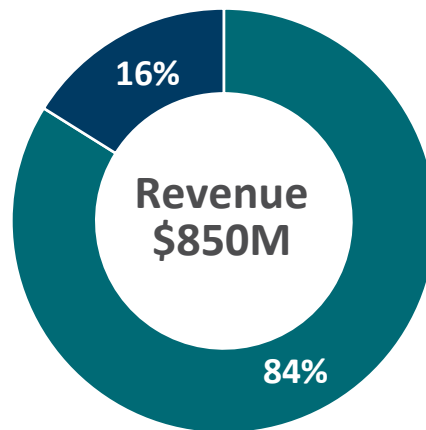
2020

\$2.3B

Served available market Advanced
Probe Cards & Engineering Systems

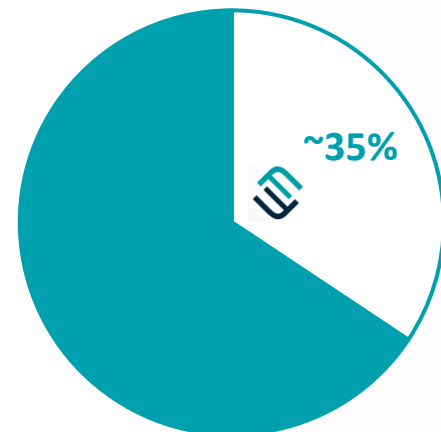


Target Model



\$2.4B*

Served available market Advanced
Probe Cards & Engineering Systems



■ Probe Cards ■ Engineering Systems

Growth to \$850M Target Model Revenue, Delivers \$2.00 Non-GAAP EPS

	2021 Actuals	Target Model
Revenue	\$770M	\$850M
Non-GAAP Gross Margin	44.9%	47.0%
Non-GAAP Operating Margin	19.9%	22.0%
Non-GAAP Effective Tax Rate	18.2%	17.0%
Non-GAAP Diluted Earnings Per Share	\$1.59	\$2.00
Free Cash Flow	\$74M	\$160M

See Supplemental Information below for reconciliations of non-GAAP financial measures to the most directly comparable GAAP financial measures.
Sources: Historical information, company SEC filings and press releases.

Drivers of Shareholder Value Creation

Revenue Growth

- Underlying growth in semiconductor applications
- Participation in Advanced Packaging and 5G mega trends
- Diversification of customers

Operating Leverage

- Gross Margin expansion
- Disciplined operating structure
- Robust Operating Cash Flow and Free Cash Flow
- Profitable growth

Capital Allocation

Focused reinvestment

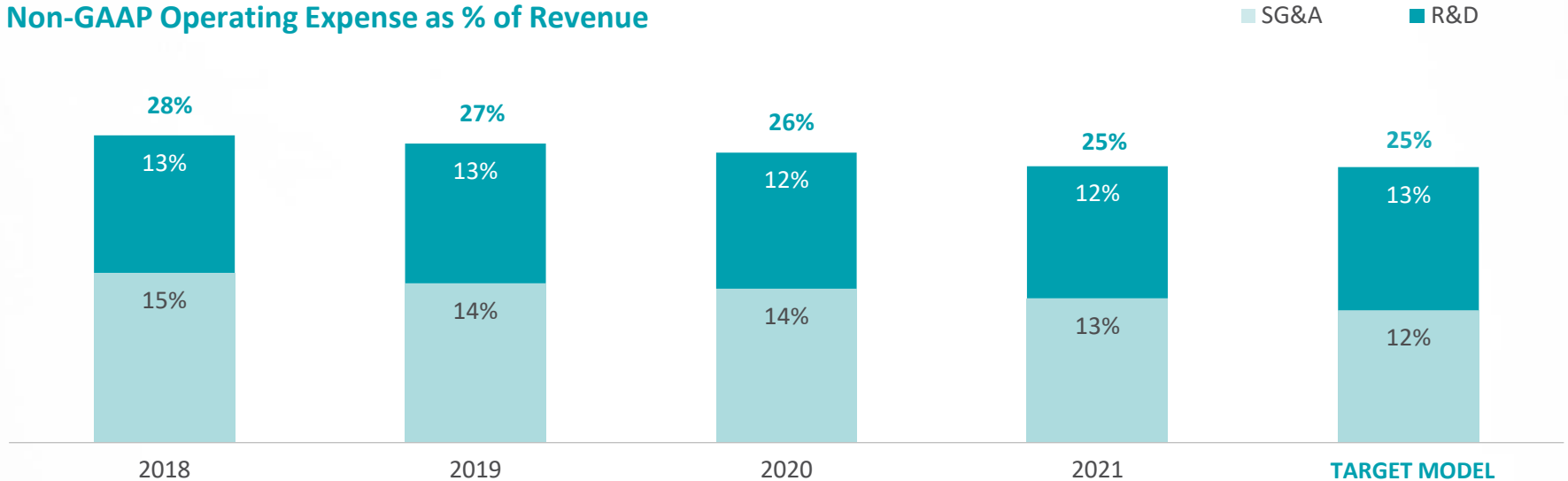
- R&D
- Capacity expansion
- Fund organic growth

M&A

- Increase served addressable market
- Acquire attractive technologies
- Patient, deliberate approach
 - Complementary to organic growth
 - Diversifies revenue stream
 - Accretive to earnings

Scale Enhances Margins, Finances Differentiating R&D

Non-GAAP Operating Expense as % of Revenue

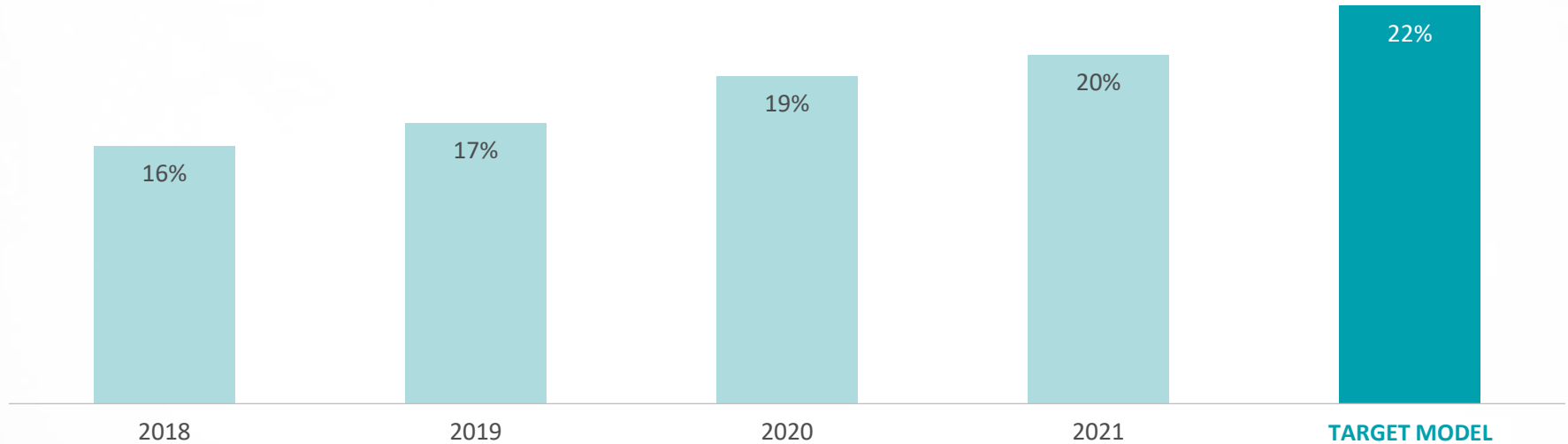


**Capitalize on scale to leverage our operating expense infrastructure.
Continued significant R&D investment creates new organic growth opportunities.**

See Supplemental Information below for reconciliations of non-GAAP financial measures to the most directly comparable GAAP financial measures.
Sources: Historical information, company SEC filings and press releases.

Driving Operating Leverage Through Scale

Non-GAAP Operating Margin



Disciplined spending and increasing scale will continue to enhance profitability

See Supplemental Information below for reconciliations of non-GAAP financial measures to the most directly comparable GAAP financial measures.
Sources: Historical information, company SEC filings and press releases.

Capital Expenditures to Support Organic Growth

	2017	2018	2019	2020	2021	Target CapEx Model
CapEx	\$18M	\$20M	\$21M	\$56M	\$67M	\$30M - \$35M
Revenue	\$548M	\$530M	\$590M	\$694M	\$770M	\$850M
CapEx as % of Revenue	3.2%	3.8%	3.5%	8.0%	8.6%	3.5%-4.0%



New Livermore Facility



Highly Automated Manufacturing



Factory Expansions

Acquisition Strategy Adds Scale and Diversification

Established process focused on extending long-term industry leadership

- Acquisition priorities
 - Market leader in growing market
 - Compelling technical capabilities
 - Accretive
 - Focus on tuck-ins as well as larger scale companies
- Leveraging FormFactor's key capabilities and infrastructure to achieve synergies

Opportunistic tuck-in acquisitions aligned with our long-term strategy and M&A principles

- Provide critical enabling technologies reinforcing FormFactor's leadership
- Create potential opportunity to increase served available market

Proven track record of identifying and integrating accretive acquisitions



Year: 2012

Amount: \$117M



Year: 2016

Amount: \$352M



Year: 2019

Amount: €19.7M

Acquisition of Advantest's probe card assets

Year: 2020

Amount: \$35M



Year: 2020

Amount: \$15M



Highly Resilient Business Model

Enabled by Flexible Cost Structure

- 100% of employees with variable pay component
- Flexible staffing model

Strong and Healthy Balance Sheet

- Supported by strong free cash flows
- History of successfully managing debt and significant borrowing capacity available if needed



Recent Results (non-GAAP)

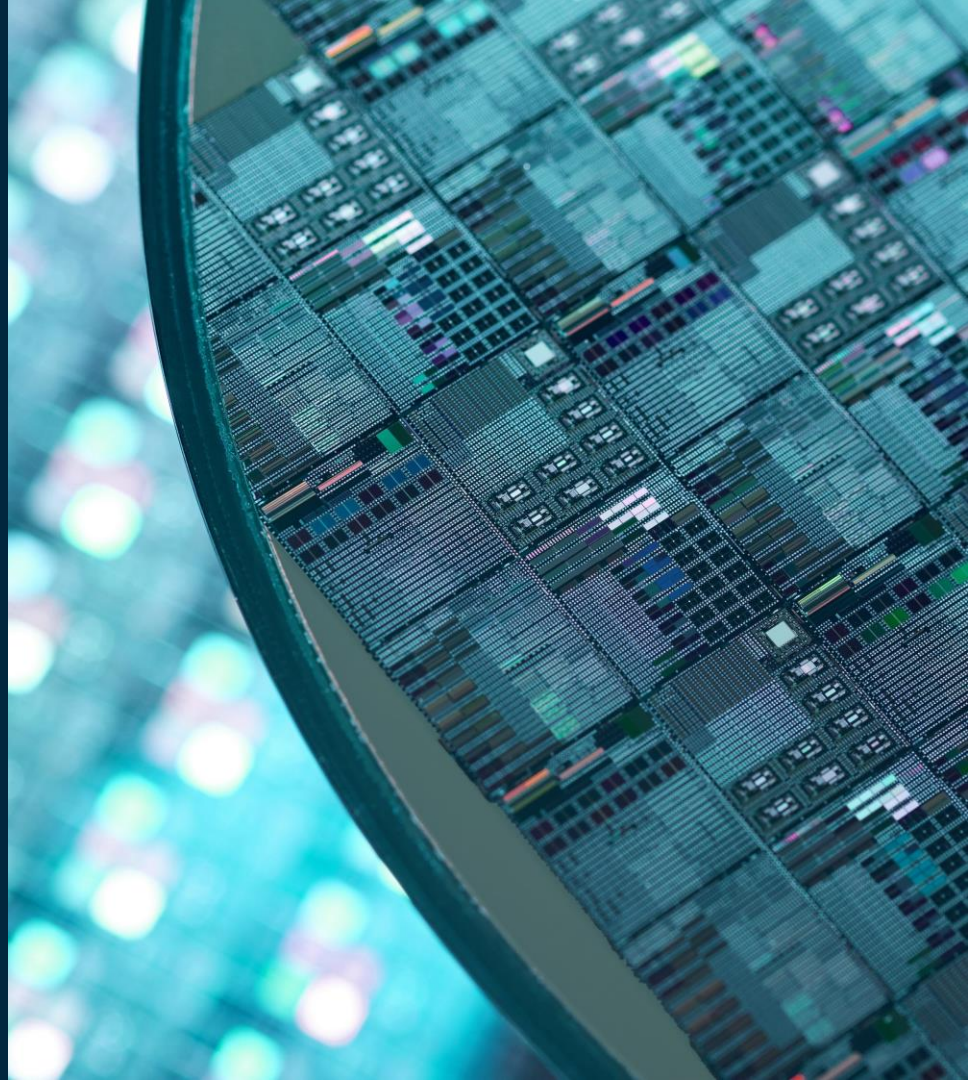
	Revenue	Gross Margin	Diluted EPS	Free Cash Flow
Q3'21 ACTUAL	\$190.0M	46.0%	\$0.40	\$14.4M
Q4'21 ACTUAL	\$205.0M	44.3%	\$0.44	\$23.9M
Q1'22 OUTLOOK	\$188M-\$200M	44%-47%	\$0.35-\$0.43	

Q4'21 and Q1'22 Themes:

- Q4 record results driven by strong demand for Foundry and Logic coupled with DRAM demand near the high levels
- Q1 outlook - expect a seasonal decline mainly in Foundry and Logic revenues, and a moderate decrease in DRAM revenues



Supplemental Information



FY 2021 GAAP to Non-GAAP Reconciliation

	GAAP	Adjustments					Non-GAAP
	Twelve Months Ended December 25, 2021	Stock-based Compensation	Amortization of Intangibles	Amortization of Acquisition Fair Value Adjustments	Restructuring	Other Adjustments	Twelve Months Ended December 25, 2021
Revenues	769,674	-	-	260	-	-	769,934
Cost of revenues	446,907	(5,200)	(12,269)	(2,266)	(3,205)	-	423,967
Gross profit	322,767	5,200	12,269	2,526	3,205	-	345,967
							44.9 %
Operating expenses:							
Research and development	100,937	(7,583)	-	-	(869)	-	92,485
Sales and marketing	75,798	(8,535)	(6,478)	-	(50)	-	60,735
General and administrative	47,994	(8,066)	-	-	-	(114)	39,814
Total operating expenses	224,729	(24,184)	(6,478)	-	(919)	(114)	193,034
Operating profit	98,038	29,384	18,747	2,526	4,124	114	152,933
Interest income	569	-	-	-	-	-	569
Interest expense	(602)	-	-	-	-	-	(602)
Other income (expense), net	495	-	-	-	-	-	495
Income before income taxes	98,500	29,384	18,747	2,526	4,124	114	153,395
Provision for income taxes	14,576	7,123	4,544	612	1,000	28	27,883
Net income	83,924	22,261	14,203	1,914	3,124	86	125,512
Net income per share:							
Basic	\$1.08	\$0.29	\$0.18	\$0.02	\$0.04	\$-	\$1.61
Diluted	\$1.06	\$0.28	\$0.18	\$0.02	\$0.04	\$-	\$1.59
Weighted-average number of shares							
Basic	77,787	77,787	77,787	77,787	77,787	77,787	77,787
Diluted	79,133	79,133	79,133	79,133	79,133	79,133	79,133

Free Cash Flow Reconciliation

Free Cash Flow Trend (in thousands)

	2017	2018	2019	2020	2021
Net cash provided by (used in operating activities)	\$ 86,323	\$ 68,700	\$ 121,048	\$ 169,256	\$ 139,364
Add: Cash paid for interest	3,836	3,113	1,405	867	643
Add: Cash paid for acquisition related expenses	-	-	213	509	209
Capital expenditures	(17,756)	(19,869)	(20,847)	(55,865)	(66,496)
Free cash flow	\$ 72,403	\$ 51,944	\$ 101,819	\$ 114,767	\$ 73,720

About Non-GAAP Financial Measures

We believe that the presentation of non-GAAP earnings per fully-diluted share, free cash flow and other non-GAAP measures in this presentation provides supplemental information that is important to understanding financial and business trends and other factors relating to our financial condition and results of operations. These non-GAAP measures are among the primary indicators used by management as a basis for planning and forecasting future periods, and by management and our board of directors to determine whether our operating performance has met certain targets and thresholds. Management uses non-GAAP operating income (loss), non-GAAP earnings per fully-diluted share and other non-GAAP measures when evaluating operating performance because it believes that the exclusion of the items indicated herein, for which the amounts or timing may vary significantly depending upon our activities and other factors, facilitates comparability of our operating performance from period to period. We use free cash flow to conduct and evaluate our business as an additional way of viewing our liquidity that, when viewed with our GAAP results, provides a more complete understanding of factors and trends affecting our cash flows. Many investors also prefer to track free cash flow, as opposed to only GAAP earnings. Free cash flow has limitations due to the fact that it does not represent the residual cash flow available for discretionary expenditures, and therefore it is important to view free cash flow as a complement to our entire consolidated statements of cash flows. We have chosen to provide non-GAAP information to investors so they can analyze our operating results closer to the way that management does, and use this information in their assessment of our business and the valuation of our company. We compute non-GAAP operating income (loss) and non-GAAP fully-diluted earnings per share by adjusting GAAP operating income (loss) and GAAP earnings per fully-diluted share to remove the impact of certain items and the tax effect of those adjustments. These and other non-GAAP measures are not in accordance with, or an alternative to, GAAP and may be materially different from other non-GAAP measures, including similarly titled non-GAAP measures used by other companies. The presentation of this additional information should not be considered in isolation from, as a substitute for, or superior to, operating income (loss) or earnings per fully-diluted share and other measures prepared in accordance with GAAP. Non-GAAP financial measures have limitations in that they do not reflect certain items that may have a material impact upon our reported financial results. We may expect to continue to incur expenses of a nature similar to these non-GAAP adjustments, and exclusion of these items should not be construed as an inference that these costs are unusual, infrequent or non-recurring.

For more information on non-GAAP measures and adjustments, please see the Supplemental Information in this presentation and available at <http://investors.formfactor.com> for reconciliations of non-GAAP financial measures to the most directly comparable GAAP financial measures.